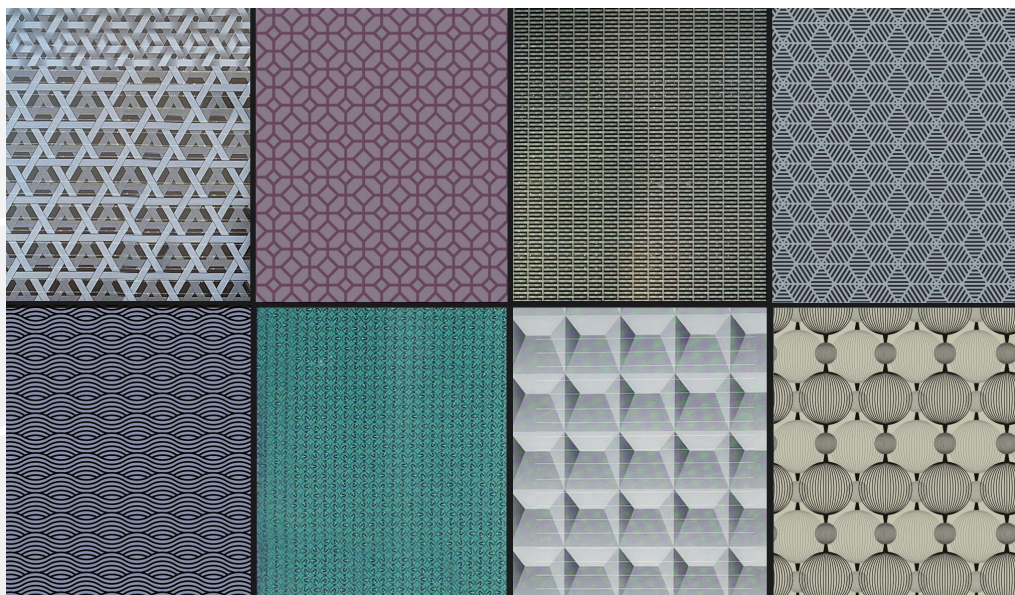


# GEOMETRY

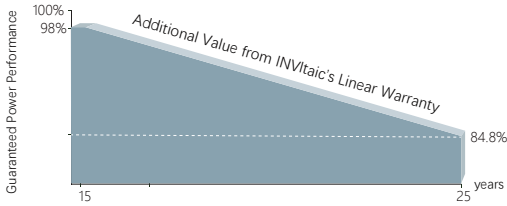


When the subtlety of shapes was beyond explanation, God brought Euclid to the earth. In the world of Geometry, running lines and curves form the intangible configuration of ratios and symmetry. A small point, a subtle line, or an insignificant figure can construct something majestic with simple repetition. Geometry with unique texture, seemingly static, reflects the creative thinking and dynamic tension of future architecture.

**INVITAIC**  
Module Model



## LINEAR PERFORMANCE WARRANTY



15 Year Product Warranty

25 Year Linear Power Warranty

0.55% Annual Degradation Over 25 years

|   |   |
|---|---|
| Glass                                     | Heat Strengthened Glass                     |
| Junction Box                              | IP68 Rated                                  |
| Output Cables                             | TÜV 1x4.0 mm <sup>2</sup> Customized Length |
| Maximum System Voltage                    | 1500 VDC (IEC)                              |
| Maximum Series Fuse Rating                | 30 A  |
| Power Tolerance                           | 0~±3 %                                      |
| Temperature Coefficients of Pmax          | -0.35 %/°C                                  |
| Temperature Coefficients of Voc           | -0.29 %/°C                                  |
| Temperature Coefficients of Isc           | 0.048 %/°C                                  |
| Nominal Operating Cell Temperature (NOCT) | 45±2 °C                                     |
| CTM                                       | 60-75 %                                     |



Thickened Double-Layer Tempered Glass



High Impact Resistance



50% Increased High Mechanical Performance Modules



Optimized Soundproofing Insulation

### Higher Aesthetics

Inherent advantages of integration in module design, better appearance without metal wire exposition.

### Higher Power Efficiency

Higher-density cell arrangement can put more cells per unit area and achieve higher module efficiency, meet the requirements for energy-saving buildings.

### Building Integrated Higher Safety

Double layers of tempered glass to meet the requirements of building safety: with fireproofing, better wind load, heat resistance and frost resistance. Be used as building unit for integrated installation.

